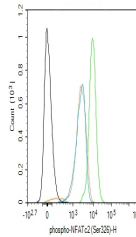


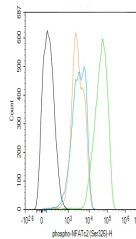
Product Datasheet

NFATc2 (phospho-Ser326) antibody (orb6499)

Description	NFATc2 (phospho-Ser326) antibody
Species/Host	Rabbit
Reactivity	Human
Conjugation	Unconjugated
Tested Applications	FC
Immunogen	KLH conjugated Synthesised phosphopeptide derived from human NFATc2 around the phosphorylation site of Ser326 (KT(p-S)PD)
Target	phospho-NFATc2 (Ser326)
Preservatives	0.01M TBS(pH7.4) with 1% rAlbumin, 0.03% Proclin300 and 50% Glycerol.
Form/Appearance	Liquid: 0.01M TBS(pH7.4) with 1% rAlbumin, 0.03% Proclin300 and 50% Glycerol.
Concentration	1mg/ml
Storage	Shipped at 4°C. Store at -20 °C for one year. Avoid repeated freeze/thaw cycles.
Note	For research use only
Isotype	IgG
Clonality	Polyclonal
Purity	affinity purified by Protein A
MW	102kDa
Uniprot ID	Q13469
Dilution Range	Flow-Cyt=1-2ug/Test, WB=1:500-2000, ELISA=1:5000-10000
Expiration Date	12 months from date of receipt.



FC analysis of Molt4 black line lysate u...



FC analysis of U251 black line lysate us...