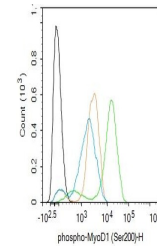


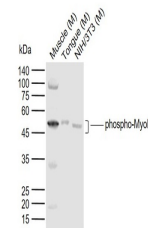
Product Datasheet

MyoD1 (phospho-Ser200) antibody (orb6466)

Description	MyoD1 (phospho-Ser200) antibody
Species/Host	Rabbit
Reactivity	Human, Mouse
Conjugation	Unconjugated
Tested Applications	FC, WB
Immunogen	KLH conjugated Synthesised phosphopeptide derived from human MyoD1 around the phosphorylation site of Ser200 (DA(p-S)SP)
Target	phospho-MyoD1 (Ser200)
Preservatives	0.01M TBS(pH7.4) with 1% rAlbumin, 0.03% Proclin300 and 50% Glycerol.
Form/Appearance	Liquid
Concentration	1mg/ml
Storage	Maintain refrigerated at 2-8°C for up to 2 weeks. For long term storage store at -20°C in small aliquots to prevent freeze-thaw cycles.
Note	For research use only
Isotype	IgG
Clonality	Polyclonal
MW	34 kDa
Uniprot ID	P10085
Dilution Range	WB=1:500-2000, Flow-Cyt=1ug/Test
Expiration Date	12 months from date of receipt.



Flow cytometry of K562. Primary Antibody ...



Western blot: Lane 1: Mouse Muscle; Lane 2: ...