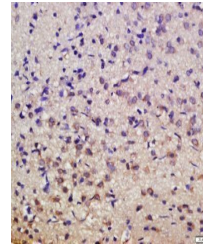


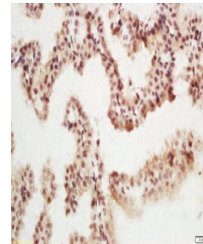
## Product Datasheet

### MSK1 (phospho-Ser376) antibody (orb6446)

<b>Description</b>	MSK1 (phospho-Ser376) antibody
<b>Species/Host</b>	Rabbit
<b>Reactivity</b>	Mouse
<b>Conjugation</b>	Unconjugated
<b>Tested Applications</b>	WB
<b>Immunogen</b>	KLH conjugated synthesised phosphopeptide derived from human MSK1 around the phosphorylation site of Ser376 (GY(p-S)FV)
<b>Target</b>	Phospho-MSK1 (Ser376)
<b>Preservatives</b>	0.01M TBS(pH7.4) with 1% rAlbumin, 0.03% Proclin300 and 50% Glycerol.
<b>Form/Appearance</b>	Liquid
<b>Concentration</b>	1mg/ml
<b>Storage</b>	Shipped at 4°C. Store at -20 °C for one year. Avoid repeated freeze/thaw cycles.
<b>Note</b>	For research use only
<b>Isotype</b>	IgG
<b>Clonality</b>	Polyclonal
<b>MW</b>	90 kDa
<b>Uniprot ID</b>	<b>075582</b>
<b>Dilution Range</b>	WB=1:500-2000
<b>Expiration Date</b>	12 months from date of receipt.



Immunohistochemical staining of rat brai...



Immunohistochemical staining of mouse pl...