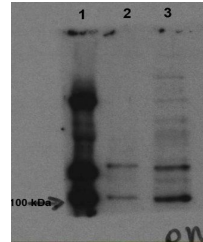


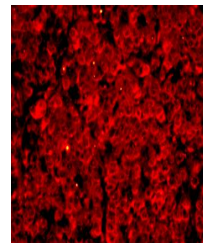
Product Datasheet

MLK3 (phospho-Thr277/Ser281) antibody (orb6424)

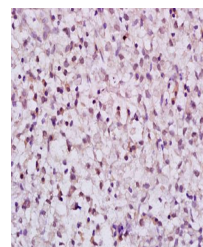
Description	MLK3 (phospho-Thr277/Ser281) antibody
Species/Host	Rabbit
Reactivity	Human, Mouse, Rat
Conjugation	Unconjugated
Tested Applications	FC, IHC-P
Immunogen	KLH conjugated synthesised phosphopeptide derived from human MLK3 around the phosphorylation site of Thr277/Ser281 (K(p-T)TQM(p-S)AA)
Target	Phospho-MLK3 (Thr277 + Ser281)
Preservatives	0.01M TBS(pH7.4) with 1% rAlbumin, 0.03% Proclin300 and 50% Glycerol.
Form/Appearance	Liquid
Concentration	1mg/ml
Storage	Shipped at 4°C. Store at -20 °C for one year. Avoid repeated freeze/thaw cycles.
Note	For research use only
Isotype	IgG
Clonality	Polyclonal
MW	93 kDa
Uniprot ID	Q16584
Dilution Range	IHC-P=1:100-500, Flow-Cyt=1ug/Test, IHC-F=1:100-500, IF=1:100-500, ELISA=1:5000-10000
Expiration Date	12 months from date of receipt.



Western blot analysis of HEK293 cells ly...



Immunofluorescence analysis of human lung ...



Immunohistochemical analysis of paraffin...