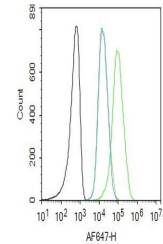


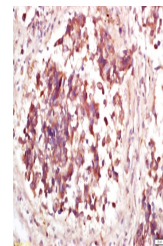
Product Datasheet

MDM2 (phospho-Thr218) antibody (orb6405)

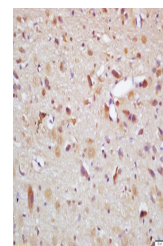
Description	MDM2 (phospho-Thr218) antibody
Species/Host	Rabbit
Reactivity	Human, Mouse, Rat
Conjugation	Unconjugated
Tested Applications	FC, IHC-P
Immunogen	KLH conjugated Synthesised phosphopeptide derived from human MDM2 around the phosphorylation site of Thr218 (TG(p-T)P-NH2)
Target	Phospho-MDM2 (Thr218)
Preservatives	0.01M TBS(pH7.4) with 1% rAlbumin, 0.03% Proclin300 and 50% Glycerol.
Form/Appearance	Liquid
Concentration	1mg/ml
Storage	Maintain refrigerated at 2-8°C for up to 2 weeks. For long term storage store at -20°C in small aliquots to prevent freeze-thaw cycles.
Note	For research use only
Isotype	IgG
Clonality	Polyclonal
MW	55 kDa
Uniprot ID	Q00987
Dilution Range	IHC-P=1:100-500, Flow-Cyt=1ug/Test, IHC-F=1:100-500, ICC=1:100, IF=1:100-500, ELISA=1:5000-10000
Expiration Date	12 months from date of receipt.



Flow cytometry of Molt4.Primary Antibody...



IHC-P analysis of human lung carcinoma u...



IHC-P analysis of rat brain tissue using...