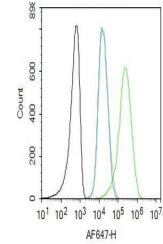


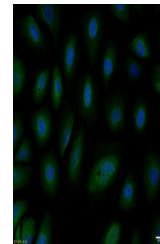
Product Datasheet

MDM2 (phospho-Ser166) antibody (orb6404)

Description	MDM2 (phospho-Ser166) antibody
Species/Host	Rabbit
Reactivity	Human
Conjugation	Unconjugated
Tested Applications	FC, ICC, IHC-P
Immunogen	KLH conjugated synthesised phosphopeptide derived from human MDM2 around the phosphorylation site of Ser166 (Al(p-S)ET)
Target	Phospho-MDM2 (Ser166)
Preservatives	0.01M TBS(pH7.4) with 1% rAlbumin, 0.03% Proclin300 and 50% Glycerol.
Form/Appearance	Liquid
Concentration	1mg/ml
Storage	Maintain refrigerated at 2-8°C for up to 2 weeks. For long term storage store at -20°C in small aliquots to prevent freeze-thaw cycles.
Note	For research use only
Isotype	IgG
Clonality	Polyclonal
MW	55 kDa
Uniprot ID	Q00987
Dilution Range	IHC-P=1:100-500, ICC=1:100, Flow-Cyt=1µg/Test, IHC-F=1:100-500, IF=1:100-500
Expiration Date	12 months from date of receipt.



Flow cytometry of Molt4.Primary Antibody...



ICC analysis of HepG2 cell using Phospho...