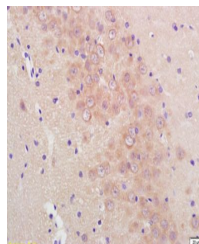


## Product Datasheet

### Mcl1 (phospho-Ser159/Thr163) antibody (orb6402)

|                            |   |
|----------------------------|---|
| <b>Description</b>         | Mcl1 (phospho-Ser159/Thr163) antibody   |
| <b>Species/Host</b>        | Rabbit  |
| <b>Reactivity</b>          | Human, Rat  |
| <b>Conjugation</b>         | Unconjugated  |
| <b>Tested Applications</b> | FC, ICC, IHC-P  |
| <b>Immunogen</b>           | KLH conjugated synthesised phosphopeptide derived from human Mcl 1 around the phosphorylation site of Ser159/Thr163 (DG(p-S)LPS(p-T)PP) |
| <b>Target</b>              | Phospho-Mcl1 (Ser159 + Thr163)  |
| <b>Preservatives</b>       | 0.01M TBS(pH7.4) with 1% rAlbumin, 0.03% Proclin300 and 50% Glycerol.   |
| <b>Form/Appearance</b>     | Liquid  |
| <b>Concentration</b>       | 1mg/ml  |
| <b>Storage</b>             | Shipped at 4°C. Store at -20 °C for one year. Avoid repeated freeze/thaw cycles.  |
| <b>Note</b>                | For research use only   |
| <b>Isotype</b>             | IgG   |
| <b>Clonality</b>           | Polyclonal  |
| <b>MW</b>                  | 39 kDa  |
| <b>Uniprot ID</b>          | <b>Q07820</b>   |
| <b>Dilution Range</b>      | IHC-P=1:100-500, ICC=1:100, Flow-Cyt=1ug/Test, IHC-F=1:100-500, IF=1:100-500, ELISA=1:5000-10000  |
| <b>Expiration Date</b>     | 12 months from date of receipt.   |



Immunohistochemical staining of rat brai...