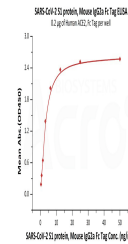


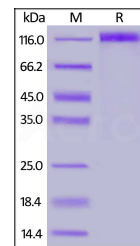
Product Datasheet

SARS-CoV-2 (COVID-19) S1 protein (orb640170)

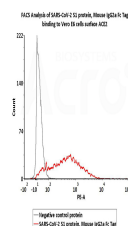
Description	It's been reported that Coronavirus can infect the human respiratory epithelial cells through intera...
Reactivity	Virus
Endotoxins	1.0 EU per µg
Conjugation	Unconjugated
Target	Spike S1
Preservatives	PBS, pH7.4
Form/Appearance	Powder
Storage	-20°C
Tag	C-mFc(mIgG2a)
Note	For research use only
Application notes	This protein carries a mouse IgG2a Fc tag at the C-terminus. The protein has a calculated MW of 101.9 kDa. The protein migrates as 115-130 kDa under reducing (R) condition (SDS-PAGE) due to glycosylation.
Protein Sequence	QHD43416.1
Purity	90%
Source	SARS-CoV-2 S1 protein, Mouse IgG2a Fc Tag (orb640170) is expressed from human 293 cells (HEK293). It contains AA Val 16 - Arg 685 (Accession # QHD43416.1).
MW	101.9 kDa
NCBI	QHD43416.1
Expiration Date	6 months from date of receipt.



Line graph illustrates about the Ag-Ab r...



SDS-page analysis of SARS-CoV-2 (COVID-1...



Flow cytometric analysis of Vero E6 cell...