
Product Datasheet

Cytochrome C Antibody (orb640148)

Description

In mammalian cells, the highly conserved cytochrome C


Species/Host

Mouse

Reactivity

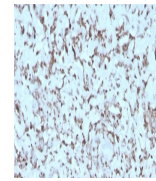
Human, Mouse, Rat

Conjugation

Unconjugated

Tested Applications

IHC-P, WB



IHC staining of FFPE human liver with re...

Immunogen

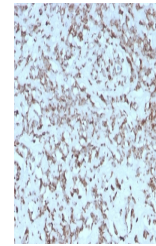
A human partial protein corresponding to amino acids 81-104 of pigeon Cytochrome C was used as the immunogen for this recombinant Cytochrome C antibody. The epitope has been localized to amino acids 93-104.

Preservatives

0.2 mg/ml with 0.1 mg/ml rAlbumin (US sourced), 0.05% sodium azide

Storage

Store the recombinant Cytochrome C antibody at 2-8°C (with azide) or aliquot and store at -20°C or colder (without azide).



IHC staining of FFPE human liver with re...

Note

For research use only

Application notes

Optimal dilution of the antibody should be determined by the researcher.

Formula

0.2 mg/ml with 0.1 mg/ml BSA (US sourced), 0.05% sodium azide

Isotype

Mouse IgG1, kappa

Clonality

Recombinant

Purity

Protein G affinity chromatography

Uniprot ID

P99999

Hazard Information

This recombinant Cytochrome C antibody is available for research use only.

Dilution Range

Immunohistochemistry (FFPE): 1-2ug/ml, Western blot: 1-2ug/ml

Expiration Date

12 months from date of receipt.



Western blot testing of human heart lysa...