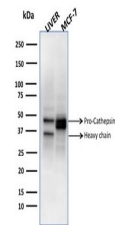


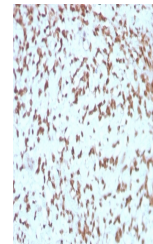
Product Datasheet

CTSD Antibody / Cathepsin D (orb640144)

Description	Cathepsin D is a ubiquitously expressed lysosomal aspartyl protease involved in the normal degradati...
Species/Host	Mouse
Reactivity	Human
Conjugation	Unconjugated
Tested Applications	IHC-P, WB
Immunogen	A recombinant human partial protein (amino acids 104-250) was used as the immunogen of the CTSD antibody.
Preservatives	0.2 mg/ml with 0.1 mg/ml rAlbumin (US sourced), 0.05% sodium azide
Storage	Store the CTSD antibody at 2-8°C (with azide) or aliquot and store at -20°C or colder (without azide).
Note	For research use only
Application notes	Optimal dilution of the antibody should be determined by the researcher.
Formula	0.2 mg/ml with 0.1 mg/ml BSA (US sourced), 0.05% sodium azide
Isotype	Mouse IgG1, kappa
Clonality	Monoclonal
Purity	Protein G affinity chromatography
Uniprot ID	P07339
Hazard Information	This CTSD antibody is available for research use only.
Dilution Range	Immunohistochemistry (FFPE): 0.1-0.2ug/ml, Western blot: 1-2ug/ml
Expiration Date	12 months from date of receipt.

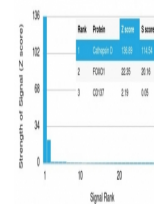


Western blot testing of human liver and ...



IHC staining of FFPE human liver with CT...

Human Protein Microarray Specificity Validation



Analysis of HuProt (TM) microarray conta...