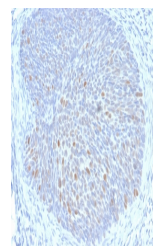


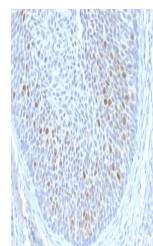
Product Datasheet

HPV-16 E1/E4 Antibody (orb640131)

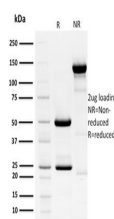
Description	The human papilloma virus (HPV) family of DNA tumor viruses includes HPV16, a 'high-risk' sexually-t...
Species/Host	Mouse
Reactivity	Virus
Conjugation	Unconjugated
Tested Applications	IHC-P
Immunogen	A recombinant human HPV16 E1/E4 fragment (amino acids 36-41) was used as the immunogen for this HPV16 E1/E4 antibody.
Preservatives	0.2 mg/ml with 0.1 mg/ml rAlbumin (US sourced), 0.05% sodium azide
Storage	Store the HPV16 E1/E4 antibody at 2-8°C (with azide) or aliquot and store at -20°C or colder (without azide).
Note	For research use only
Application notes	Optimal dilution of the antibody should be determined by the researcher.
Formula	0.2 mg/ml with 0.1 mg/ml BSA (US sourced), 0.05% sodium azide
Isotype	Mouse IgG1, kappa
Clonality	Monoclonal
Purity	Protein G affinity chromatography
Hazard Information	This HPV16 E1/E4 antibody is available for research use only.
Dilution Range	Immunohistochemistry (FFPE): 1-2ug/ml
Expiration Date	12 months from date of receipt.



IHC staining of FFPE human cervix with H...



IHC staining of FFPE human cervix with H...



SDS-PAGE analysis of purified, BSA-free ...