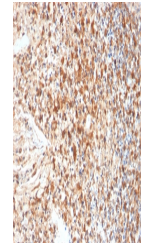


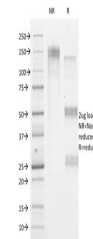
Product Datasheet

HSV1 Antibody / Herpes Simplex Virus Type I (orb640126)

Description	The antibody reacts with HSV type 1 specific antigen. It is suitable for detection of HSV in human C...
Species/Host	Mouse
Reactivity	Virus
Conjugation	Unconjugated
Tested Applications	IHC-P
Immunogen	Baculovirus-expressed HSV DNA polymerase (POL) and POL/UL42 complex was used as the immunogen for this HSV1 antibody.
Preservatives	0.2 mg/ml with 0.1 mg/ml rAlbumin (US sourced), 0.05% sodium azide
Storage	Store the HSV1 antibody at 2-8°C (with azide) or aliquot and store at -20°C or colder (without azide).
Note	For research use only
Application notes	Optimal dilution of the antibody should be determined by the researcher.
Formula	0.2 mg/ml with 0.1 mg/ml BSA (US sourced), 0.05% sodium azide
Isotype	Mouse IgG1, kappa
Clonality	Monoclonal
Purity	Protein G affinity chromatography
Hazard Information	This HSV1 antibody is available for research use only.
Dilution Range	Immunohistochemistry (FFPE): 1-2ug/ml
Expiration Date	12 months from date of receipt.



IHC staining of FFPE human cervix with H...



SDS-PAGE analysis of purified, BSA-free ...