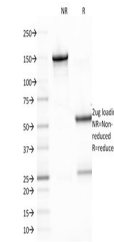


Product Datasheet

EBV Antibody / Epstein-Barr Virus (orb640114)

Description	Clone CS2 is one of four clones to EBV. Each clone reacts with different epitopes on the hydrophilic...
Species/Host	Mouse
Reactivity	Virus
Conjugation	Unconjugated
Tested Applications	ELISA, WB
Immunogen	Recombinant fusion protein containing the sequence of bacterial beta-galactosidase and the carboxyl half of EBV-encoded LMP was used as the immunogen for the Epstein-Barr Virus antibody.
Preservatives	0.2 mg/ml with 0.1 mg/ml rAlbumin (US sourced), 0.05% sodium azide
Storage	Store the Epstein-Barr Virus antibody at 2-8°C (with azide) or aliquot and store at -20°C or colder (without azide).
Note	For research use only
Application notes	Optimal dilution of the antibody should be determined by the researcher.
Formula	0.2 mg/ml with 0.1 mg/ml BSA (US sourced), 0.05% sodium azide
Isotype	Mouse IgG1, kappa
Clonality	Monoclonal
Purity	Protein G affinity chromatography
Hazard Information	This Epstein-Barr Virus antibody is available for research use only.
Dilution Range	ELISA (order BSA/azide-free format for coating), Western blot: 1-2ug/ml
Expiration Date	12 months from date of receipt.



SDS-PAGE analysis of purified, BSA-free ...