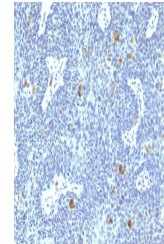


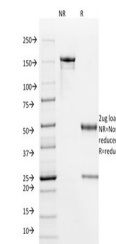
Product Datasheet

HPV-16 E6 Antibody (orb640113)

Description	Reacts with E6 protein of human papilloma virus type 16 (HPV-16). Infection with specific types of H...
Species/Host	Mouse
Reactivity	Virus
Conjugation	Unconjugated
Tested Applications	IHC-P
Immunogen	Amino acids MHQKRTAMFQDPPQERPRKLPQLC were used as the immunogen for this HPV-16 antibody.
Preservatives	0.2 mg/ml with 0.1 mg/ml rAlbumin (US sourced), 0.05% sodium azide
Storage	Store the HPV-16 E6 antibody at 2-8°C (with azide) or aliquot and store at -20°C or colder (without azide).
Note	For research use only
Application notes	Optimal dilution of the antibody should be determined by the researcher.
Formula	0.2 mg/ml with 0.1 mg/ml BSA (US sourced), 0.05% sodium azide
Isotype	Mouse IgG1, kappa
Clonality	Monoclonal
Purity	Protein G affinity chromatography
Hazard Information	This HPV-16 E6 antibody is available for research use only.
Dilution Range	Immunohistochemistry (FFPE): 1-2ug/ml
Expiration Date	12 months from date of receipt.



IHC staining of FFPE human cervix with H...



SDS-PAGE analysis of purified, BSA-free ...