

---

## Product Datasheet

### Cytokeratin 20 Antibody / CK20 (orb640111)

**Description**

This MAb recognizes an intermediate filament protein of


**Species/Host**

Rabbit

**Reactivity**

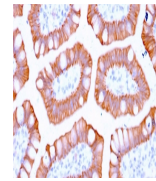
Human

**Conjugation**

Unconjugated

**Tested Applications**

IHC-P, WB



IHC staining of FFPE human colon with re...

**Immunogen**

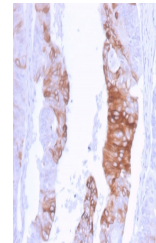
A recombinant human partial protein (amino acids 196-323) was used as the immunogen for this Cytokeratin 20 antibody.

**Preservatives**

0.2 mg/ml with 0.1 mg/ml rAlbumin (US sourced), 0.05% sodium azide

**Storage**

Store the recombinant CK20 antibody at 2-8°C (with azide) or aliquot and store at -20°C or colder (without azide).



IHC staining of FFPE human colon carcino...

**Note**

For research use only

**Application notes**

Optimal dilution of the antibody should be determined by the researcher.

**Formula**

0.2 mg/ml with 0.1 mg/ml BSA (US sourced), 0.05% sodium azide

**Isotype**

Rabbit IgG

**Clonality**

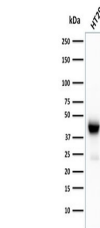
Recombinant

**Purity**

Protein A affinity chromatography

**Uniprot ID**

**P35900**



Western blot testing of human HT29 cell ...

**Hazard Information**

This recombinant CK20 antibody is available for research use only.

**Dilution Range**

Western blot: 1-2ug/ml, Immunohistochemistry (FFPE): 1-2ug/ml

**Expiration Date**

12 months from date of receipt.