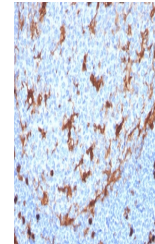


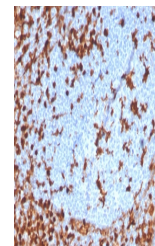
Product Datasheet

Annexin A1 Antibody (orb640106)

Description	The ANXA1 gene belongs to the annexin family, and contains 4 annexin repeats. A pair of annexin repe...
Species/Host	Mouse
Reactivity	Human
Conjugation	Unconjugated
Tested Applications	IHC-P
Immunogen	Recombinant human full-length protein was used as the immunogen for the recombinant Annexin A1 antibody.
Preservatives	0.2 mg/ml in 1X PBS with 0.1 mg/ml rAlbumin (US sourced) and 0.05% sodium azide
Storage	Store the recombinant Annexin A1 antibody at 2-8°C (with azide) or aliquot and store at -20°C or colder (without azide).
Note	For research use only
Application notes	Optimal dilution of the antibody should be determined by the researcher.
Formula	0.2 mg/ml in 1X PBS with 0.1 mg/ml BSA (US sourced) and 0.05% sodium azide
Isotype	Rabbit IgG, kappa
Clonality	Recombinant
Purity	Protein A affinity chromatography
Uniprot ID	P04083
Hazard Information	This recombinant Annexin A1 antibody is available for research use only.
Dilution Range	Immunohistochemistry (FFPE): 1-2ug/ml for 30 min at RT
Expiration Date	12 months from date of receipt.



IHC staining of FFPE human tonsil with r...



IHC staining of FFPE human tonsil with r...