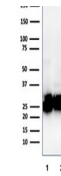

Product Datasheet

Pan-HLA Antibody (MHC II) (orb640104)

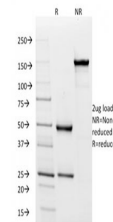
Description

Reacts with a common epitope of human major

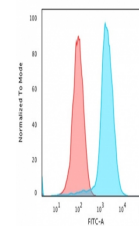
Species/Host	Mouse
Reactivity	Human
Conjugation	Unconjugated
Tested Applications	FACS, IF, IHC-P, WB
Immunogen	The non-T, non-B human acute lymphoblastic leukemia REH6 cell line was used as the immunogen for the Pan-HLA antibody.
Preservatives	0.2 mg/ml with 0.1 mg/ml rAlbumin (US sourced), 0.05% sodium azide
Storage	Store the recombinant Pan-HLA antibody at 2-8°C (with azide) or aliquot and store at -20°C or colder (without azide).
Note	For research use only
Application notes	Optimal dilution of the antibody should be determined by the researcher.
Formula	0.2 mg/ml with 0.1 mg/ml BSA (US sourced), 0.05% sodium azide
Isotype	Mouse IgG1, kappa
Clonality	Recombinant
Purity	Protein G affinity chromatography
Uniprot ID	P01909, P01920, P01903, P04440, P01908
Hazard Information	This recombinant Pan-HLA antibody is available for research use only.
Dilution Range	Flow cytometry: 1-2ug/million cells in 0.1ml, Immunofluorescence: 1-2ug/ml, Immunohistochemistry (FFPE): 1-2ug/ml, Western blot: 1-2ug/ml
Expiration Date	12 months from date of receipt.



Western blot testing of human 1) Ramos a...



SDS-PAGE analysis of purified, BSA-free ...



Flow cytometry testing of human Raji cel...