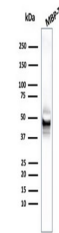


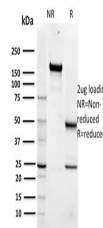
Product Datasheet

Maltose Binding Protein Antibody / maleE / MBP tag (orb640092)

Description	Plasmid vectors for the expression of coding regions of eukaryotic genes in bacterial, insect and ma...
Species/Host	Mouse
Conjugation	Unconjugated
Tested Applications	IF, WB
Immunogen	MOS maltose binding protein fusion protein was used as the immunogen for this MBP tag antibody.
Preservatives	0.2 mg/ml with 0.1 mg/ml rAlbumin (US sourced), 0.05% sodium azide
Storage	Store the MBP tag antibody at 2-8°C (with azide) or aliquot and store at -20°C or colder (without azide).
Note	For research use only
Application notes	Optimal dilution of the antibody should be determined by the researcher.
Formula	0.2 mg/ml with 0.1 mg/ml BSA (US sourced), 0.05% sodium azide
Isotype	Mouse IgG1, kappa
Clonality	Monoclonal
Purity	Protein G affinity chromatography
Hazard Information	This MBP tag antibody is available for research use only.
Dilution Range	Immunofluorescence: 1-2ug/ml, Western blot: 1-2ug/ml
Expiration Date	12 months from date of receipt.



Western blot testing of MBP-tagged recom...



SDS-PAGE analysis of purified, BSA-free ...