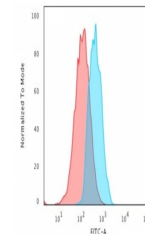


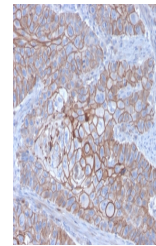
Product Datasheet

E-Cadherin Antibody / CDH1 (orb640072)

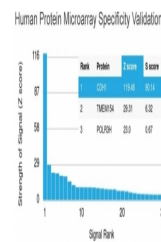
Description	Recognizes a protein of 120-80kDa, identified as E-cadherin. Cadherins comprise a family of Ca ²⁺ -dep...
Species/Host	Mouse
Reactivity	Human
Conjugation	Unconjugated
Tested Applications	FACS, IHC-P
Immunogen	A recombinant human partial protein (amino acids 567-691) was used as the immunogen for this E-Cadherin antibody.
Preservatives	0.2 mg/ml with 0.1 mg/ml rAlbumin (US sourced), 0.05% sodium azide
Storage	Store the E-Cadherin antibody at 2-8°C (with azide) or aliquot and store at -20°C or colder (without azide).
Note	For research use only
Application notes	Optimal dilution of the antibody should be determined by the researcher.
Formula	0.2 mg/ml with 0.1 mg/ml BSA (US sourced), 0.05% sodium azide
Isotype	Mouse IgG1, kappa
Clonality	Monoclonal
Purity	Protein G affinity chromatography
Uniprot ID	P12830
Hazard Information	This E-Cadherin antibody is available for research use only.
Dilution Range	Flow cytometry: 1-2ug/million cells in 0.1ml, Immunohistochemistry (FFPE): 1-2ug/ml
Expiration Date	12 months from date of receipt.



Flow cytometry testing of human MCF7 cel...



IHC staining of FFPE human breast carcin...



Analysis of HuProt (TM) microarray conta...