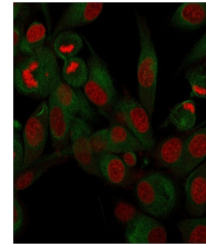


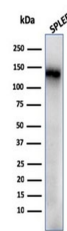
## Product Datasheet

### CD68 Antibody (orb640066)

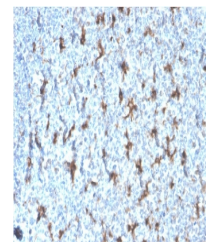
<b>Description</b>	This antibody recognizes a glycoprotein of 110kDa, which is identified as CD68. It is important for ...
<b>Species/Host</b>	Mouse
<b>Reactivity</b>	Human
<b>Conjugation</b>	Unconjugated
<b>Tested Applications</b>	IF, IHC-P, WB
<b>Immunogen</b>	A recombinant full-length human protein was used as the immunogen for this recombinant CD68 antibody.
<b>Preservatives</b>	0.2 mg/ml with 0.1 mg/ml rAlbumin (US sourced), 0.05% sodium azide
<b>Storage</b>	Store the recombinant CD68 antibody at 2-8°C (with azide) or aliquot and store at -20°C or colder (without azide).
<b>Note</b>	For research use only
<b>Application notes</b>	Optimal dilution of the antibody should be determined by the researcher.
<b>Formula</b>	0.2 mg/ml with 0.1 mg/ml BSA (US sourced), 0.05% sodium azide
<b>Isotype</b>	Mouse IgG1, kappa
<b>Clonality</b>	Recombinant
<b>Purity</b>	Protein G affinity chromatography
<b>Hazard Information</b>	This recombinant CD68 antibody is available for research use only.
<b>Dilution Range</b>	Immunofluorescence: 1-2ug/ml, Western blot: 1-2ug/ml, Immunohistochemistry (FFPE): 1-2ug/ml
<b>Expiration Date</b>	12 months from date of receipt.



Immunofluorescent staining of permeabiliz...



Western blot testing of human spleen lys...



IHC staining of FFPE human tonsil with r...