
Product Datasheet

CD40L Antibody / TRAP / CD154 (orb640054)

Description

CD40LG expression is mainly confined to the CD4-

Species/Host

Mouse

Reactivity

Human

Conjugation

Unconjugated

Tested Applications

ELISA, FACS, IF, IHC-P

Immunogen

A portion of amino acids 108-261 from the human protein was used as the immunogen for the CD40L antibody.

Preservatives

0.2 mg/ml with 0.1 mg/ml rAlbumin (US sourced), 0.05% sodium azide

Storage

Store the CD40L antibody at 2-8°C (with azide) or aliquot and store at -20°C or colder (without azide).

Note

For research use only

Application notes

Optimal dilution of the antibody should be determined by the researcher.

Formula

0.2 mg/ml with 0.1 mg/ml BSA (US sourced), 0.05% sodium azide

Isotype

Mouse IgG1, kappa

Clonality

Monoclonal

Purity

Protein G affinity chromatography

Uniprot ID

P29965

Hazard Information

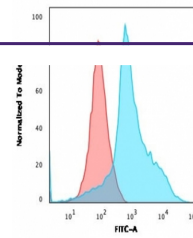
This CD40L antibody is available for research use only.

Dilution Range

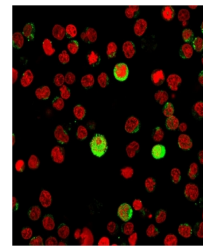
ELISA (order BSA-free format for coating), Flow cytometry: 1-2ug/million cells in 0.1ml, Immunofluorescence: 1-2ug/ml, Immunohistochemistry (FFPE): 1-2ug/ml

Expiration Date

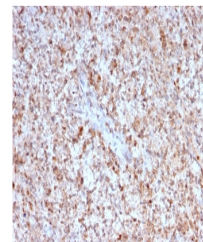
12 months from date of receipt.



Flow testing of human Jurkat cells with ...



Immunofluorescent staining of human Jurk...



IHC testing of FFPE human spleen with CD...