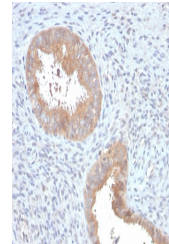


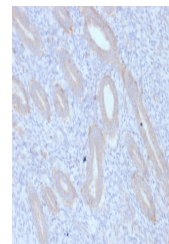
## Product Datasheet

### ATG5 Antibody (orb640047)

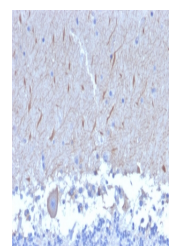
<b>Description</b>	The protein encoded by this gene, in combination with autophagy protein 12, functions as an E1-like ...
<b>Species/Host</b>	Mouse
<b>Reactivity</b>	Human
<b>Conjugation</b>	Unconjugated
<b>Tested Applications</b>	ELISA, IHC-P, WB
<b>Immunogen</b>	A recombinant human partial protein (amino acids 1-119) was used as the immunogen for the ATG5 antibody.
<b>Preservatives</b>	0.2 mg/ml with 0.1 mg/ml rAlbumin (US sourced), 0.05% sodium azide
<b>Storage</b>	Store the ATG5 antibody at 2-8°C (with azide) or aliquot and store at -20°C or colder (without azide).
<b>Note</b>	For research use only
<b>Application notes</b>	Optimal dilution of the antibody should be determined by the researcher.
<b>Formula</b>	0.2 mg/ml with 0.1 mg/ml BSA (US sourced), 0.05% sodium azide
<b>Isotype</b>	Mouse IgG1, kappa
<b>Clonality</b>	Monoclonal
<b>Purity</b>	Protein G affinity chromatography
<b>Uniprot ID</b>	<b>Q9H1Y0</b>
<b>Hazard Information</b>	This ATG5 antibody is available for research use only.
<b>Dilution Range</b>	ELISA (order BSA-free format for coating),Western blot: 1-2ug/ml,Immunohistochemistry (FFPE): 1-2ug/ml
<b>Expiration Date</b>	12 months from date of receipt.



IHC staining of FFPE human uterus with ATG5 antibody.



IHC staining of FFPE human endometrium with ATG5 antibody.



IHC staining of FFPE human brain with ATG5 antibody.