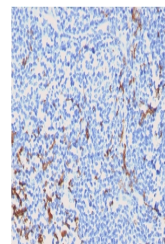


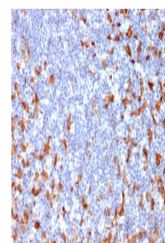
Product Datasheet

CD163 Antibody (orb640039)

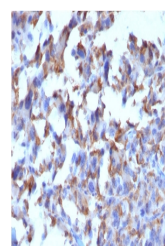
Description	This MAb recognizes a protein of 140kDa, identified as CD163. It has been identified as an acute pha...
Species/Host	Mouse
Reactivity	Human
Conjugation	Unconjugated
Tested Applications	ELISA, IHC-P
Immunogen	A recombinant human partial protein corresponding to amino acids 43-196 was used as the immunogen for the CD163 antibody.
Preservatives	0.2 mg/ml with 0.1 mg/ml rAlbumin (US sourced), 0.05% sodium azide
Storage	Store the CD163 antibody at 2-8°C (with azide) or aliquot and store at -20°C or colder (without azide).
Note	For research use only
Application notes	Optimal dilution of the antibody should be determined by the researcher.
Formula	0.2 mg/ml with 0.1 mg/ml BSA (US sourced), 0.05% sodium azide
Isotype	Mouse IgG2b, kappa
Clonality	Monoclonal
Purity	Protein G affinity chromatography
Uniprot ID	Q86VB7
Hazard Information	This CD163 antibody is available for research use only.
Dilution Range	ELISA (order BSA-free format for coating), Immunohistochemistry (FFPE): 1-2ug/ml
Expiration Date	12 months from date of receipt.



IHC testing of FFPE human tonsil with CD...



IHC testing of FFPE human lymph node wit...



IHC testing of FFPE human histiocytoma w...