

---

## Product Datasheet

### EpCAM Antibody (orb640035)

**Description**

EGP40 is a 40-43kDa transmembrane epithelial

**Species/Host**

Rabbit

**Reactivity**

Human

**Conjugation**

Unconjugated

**Tested Applications**

FACS, IHC-P

**Immunogen**

A recombinant human partial protein (amino acids 100-224) was used as the immunogen for the EpCAM antibody. The epitope of this mAb has been mapped to between amino acids 202-212.

**Preservatives**

0.2 mg/ml with 0.1 mg/ml rAlbumin (US sourced), 0.05% sodium azide

**Storage**

Store the recombinant EpCAM antibody at 2-8°C (with azide) or aliquot and store at -20°C or colder (without azide).

**Note**

For research use only

**Application notes**

Optimal dilution of the antibody should be determined by the researcher.

**Formula**

0.2 mg/ml with 0.1 mg/ml BSA (US sourced), 0.05% sodium azide

**Isotype**

Rabbit IgG

**Clonality**

Recombinant

**Purity**

Protein A affinity chromatography

**Uniprot ID**

**P16422**

**Hazard Information**

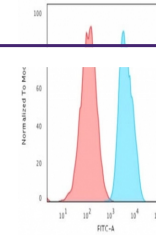
This recombinant EpCAM antibody is available for research use only.

**Dilution Range**

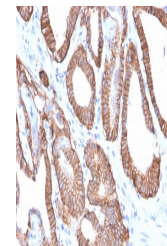
Flow cytometry: 1-2ug/million cells in 0.1ml, Immunohistochemistry (FFPE): 1-2ug/ml

**Expiration Date**

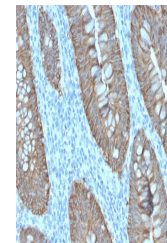
12 months from date of receipt.



Flow cytometry testing of human MCF7 cel...



IHC staining of FFPE human prostate carc...



IHC staining of FFPE human colon carcino...