
Product Datasheet

**ACTN2 Antibody / Alpha Actinin 2 / Sarcomeric
Alpha Actinin (orb640017)**

Description

Alpha actinins belong to the spectrin gene



cytoskele...

Species/Host

Mouse

Reactivity

Human

Conjugation

Unconjugated

Tested Applications

IHC-P, WB

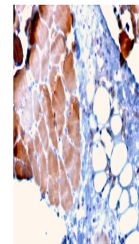
IHC staining of FFPE human cardiac muscul...

Immunogen

Amino acids 557-692 from the human protein were used as the immunogen for this Sarcomeric Alpha Actinin antibody.

Preservatives

0.2 mg/ml with 0.1 mg/ml rAlbumin (US sourced), 0.05% sodium azide


Storage

Store the Actinin Alpha 2 antibody at 2-8°C (with azide) or aliquot and store at -20°C or colder (without azide).

Note

For research use only

Application notes

Optimal dilution of the antibody should be determined by the researcher.

IHC staining of FFPE human skeletal musc...

Formula

0.2 mg/ml with 0.1 mg/ml BSA (US sourced), 0.05% sodium azide

Isotype

Mouse IgG2b, kappa

Clonality

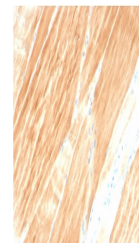
Monoclonal

Purity

Protein G affinity chromatography

Uniprot ID

P35609


Hazard Information

This Actinin Alpha 2 antibody is available for research use only.

Dilution Range

Western blot: 1-2ug/ml, Immunohistochemistry (FFPE): 1-2ug/ml

IHC staining of FFPE human skeletal musc...

Expiration Date

12 months from date of receipt.