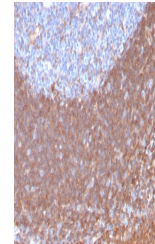


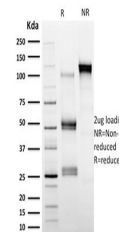
Product Datasheet

Calpastatin Antibody (orb640009)

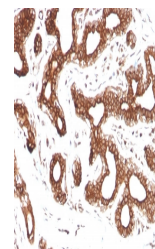
Description	Calpastatin is an intracellular calcium-dependent protease that cleaves cytoskeletal and sub-membran...
Species/Host	Mouse
Reactivity	Human
Conjugation	Unconjugated
Tested Applications	IHC-P
Immunogen	A recombinant full-length human CAST protein was used as the immunogen for this Calpastatin antibody.
Preservatives	0.2 mg/ml with 0.1 mg/ml rAlbumin (US sourced), 0.05% sodium azide
Storage	Store the Calpastatin antibody at 2-8°C (with azide) or aliquot and store at -20°C or colder (without azide).
Note	For research use only
Application notes	Optimal dilution of the antibody should be determined by the researcher.
Formula	0.2 mg/ml with 0.1 mg/ml BSA (US sourced), 0.05% sodium azide
Isotype	Mouse IgG1, kappa
Clonality	Monoclonal
Purity	Protein G affinity chromatography
Uniprot ID	P20810
Hazard Information	This Calpastatin antibody is available for research use only.
Dilution Range	Immunohistochemistry (FFPE): 1-2ug/ml
Expiration Date	12 months from date of receipt.



IHC staining of FFPE human tonsil with C...



SDS-PAGE analysis of purified, BSA-free ...



IHC staining of FFPE human breast carcin...