

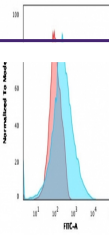
---

## Product Datasheet

**PD-L2 Antibody / Programmed death ligand 2 /  
CD273 (orb640005)**

**Description**

Recognizes a protein of about 31kDa, which is



Flow cytometry testing of human Jurkat c...

**Species/Host**

Engagement of ...

Mouse

**Reactivity**

Human

**Conjugation**

Unconjugated

**Tested Applications**

FACS

**Immunogen**

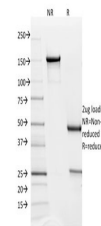
A recombinant fragment of human PD-L2 protein within amino acids 27-220 was used as the immunogen for the PDL2 antibody.

**Preservatives**

0.2 mg/ml with 0.1 mg/ml rAlbumin (US sourced), 0.05% sodium azide

**Storage**

Store the PDL2 antibody at 2-8°C (with azide) or aliquot and store at -20°C or colder (without azide).



SDS-PAGE analysis of purified, BSA-free ...

**Note**

For research use only

**Application notes**

Optimal dilution of the antibody should be determined by the researcher.

**Formula**

0.2 mg/ml with 0.1 mg/ml BSA (US sourced), 0.05% sodium azide

**Isotype**

Mouse IgG1, kappa

**Clonality**

Monoclonal

**Purity**

Protein G affinity chromatography

**Uniprot ID**

Q9Q51

**Hazard Information**

This PDL2 antibody is available for research use only.

**Dilution Range**

Flow cytometry: 1-2ug/million cells in 0.1ml

**Expiration Date**

12 months from date of receipt.