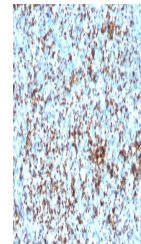


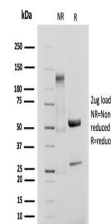
Product Datasheet

Integrin beta 3 Antibody / ITGB3 / CD61 (orb639978)

Description	Reacts with human integrin beta3 (GPIIIa, vitronectin receptor beta chain). It associates with the I...
Species/Host	Rabbit
Reactivity	Human
Conjugation	Unconjugated
Tested Applications	IHC-P
Immunogen	A recombinant human partial protein (amino acids 385-490) was used as the immunogen for this recombinant CD61 antibody.
Preservatives	0.2 mg/ml with 0.1 mg/ml rAlbumin (US sourced), 0.05% sodium azide
Storage	Store the recombinant CD61 antibody at 2-8°C (with azide) or aliquot and store at -20°C or colder (without azide).
Note	For research use only
Application notes	Optimal dilution of the antibody should be determined by the researcher.
Formula	0.2 mg/ml with 0.1 mg/ml BSA (US sourced), 0.05% sodium azide
Isotype	Rabbit IgG
Clonality	Recombinant
Purity	Protein A affinity chromatography
Hazard Information	This recombinant CD61 antibody is available for research use only.
Dilution Range	Immunohistochemistry (FFPE): 1-2ug/ml
Expiration Date	12 months from date of receipt.



IHC testing of FFPE human spleen with re...



SDS-PAGE analysis of purified, BSA-free ...