

Product Datasheet

TPSAB1 Antibody / Mast Cell Tryptase (orb639974)

Description Tryptases comprise a family of trypsin-like serine proteases (peptidase family S1). Tryptases are st...

Species/Host Mouse

Reactivity Human

Conjugation Unconjugated

Tested Applications IHC-P

Immunogen A portion of amino acids 115-233 from the human protein was used as the immunogen for this TPSAB1 antibody.

Preservatives 0.2 mg/ml with 0.1 mg/ml rAlbumin (US sourced), 0.05% sodium azide

Storage Store the Mast Cell Tryptase antibody at 2-8°C (with azide) or aliquot and store at -20°C or colder (without azide).

Note For research use only

Application notes Optimal dilution of the antibody should be determined by the researcher.

Formula 0.2 mg/ml with 0.1 mg/ml BSA (US sourced), 0.05% sodium azide

Isotype Mouse IgG1, kappa

Clonality Monoclonal

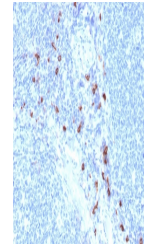
Purity Protein G affinity chromatography

Uniprot ID [Q15661](#)

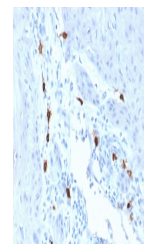
Hazard Information This Mast Cell Tryptase antibody is available for research use only.

Dilution Range Immunohistochemistry (FFPE): 1-2ug/ml

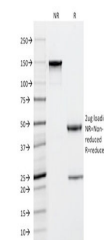
Expiration Date 12 months from date of receipt.



IHC staining of FFPE human tonsil with M...



IHC staining of FFPE human skin with Mas...



SDS-PAGE analysis of purified, BSA-free ...