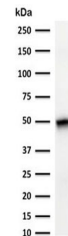


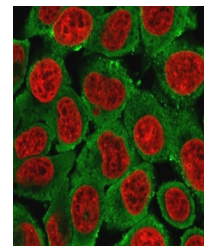
Product Datasheet

KRT15 Antibody / Cytokeratin 15 (orb639964)

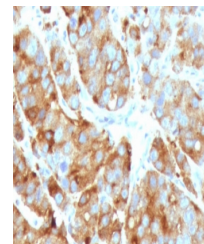
Description	Cytokeratin 15 is a type I cytokeratin. It is found in some progenitor basal cells within complex ep...
Species/Host	Mouse
Reactivity	Human
Conjugation	Unconjugated
Tested Applications	IF, IHC-P, WB
Immunogen	Recombinant human protein was used as the immunogen for the Cytokeratin 15 antibody.
Preservatives	0.2 mg/ml with 0.1 mg/ml rAlbumin (US sourced), 0.05% sodium azide
Storage	Store the Cytokeratin 15 antibody at 2-8°C (with azide) or aliquot and store at -20°C or colder (without azide).
Note	For research use only
Application notes	Optimal dilution of the antibody should be determined by the researcher.
Formula	0.2 mg/ml with 0.1 mg/ml BSA (US sourced), 0.05% sodium azide
Isotype	Mouse IgG2c, kappa
Clonality	Monoclonal
Purity	Protein G affinity chromatography
Uniprot ID	P19012
Hazard Information	This Cytokeratin 15 antibody is available for research use only.
Dilution Range	Immunofluorescence: 1-2ug/ml,Western blot: 1-2ug/ml,Immunohistochemistry (FFPE): 1-2ug/ml
Expiration Date	12 months from date of receipt.



Western blot testing of human thymus tis...



Immunofluorescent staining of MeOH-fixed...



IHC staining of FFPE human prostate carc...