
Product Datasheet

C1QA Antibody / Complement C1q A-Chain (orb639962)

Description

C1q, a subcomponent of the classical complement



C...

Species/Host

Mouse

Reactivity

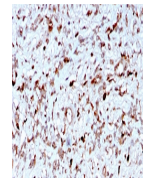
Human

Conjugation

Unconjugated

Tested Applications

IHC-P



IHC staining of FFPE human liver with C1...

Immunogen

A recombinant human partial protein (amino acids 104-237) was used as the immunogen for the C1QA antibody.

Preservatives

0.2 mg/ml with 0.1 mg/ml rAlbumin (US sourced), 0.05% sodium azide

Storage

Store the C1QA antibody at 2-8°C (with azide) or aliquot and store at -20°C or colder (without azide).

Note

For research use only

Application notes

Optimal dilution of the antibody should be determined by the researcher.

Formula

0.2 mg/ml with 0.1 mg/ml BSA (US sourced), 0.05% sodium azide

Isotype

Mouse IgG2b, kappa

Clonality

Monoclonal

Purity

Protein G affinity chromatography

Uniprot ID

P02745

Hazard Information

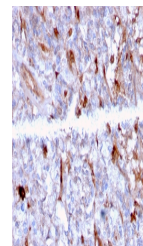
This C1QA antibody is available for research use only.

Dilution Range

Immunohistochemistry (FFPE): 1-2ug/ml

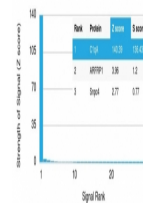
Expiration Date

12 months from date of receipt.



IHC staining of FFPE human kidney with C...

Human Protein Microarray Specificity Validation



Analysis of HuProt (TM) microarray conta...