
Product Datasheet

C1QA Antibody / Complement C1q A-Chain (orb639960)

Description

C1q, a subcomponent of the classical complement



C...

Species/Host

Mouse

Reactivity

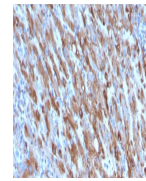
Human

Conjugation

Unconjugated

Tested Applications

IHC-P, WB



IHC staining of FFPE human liver with C1...

Immunogen

A recombinant human partial protein (amino acids 104-237) was used as the immunogen for the C1QA antibody.

Preservatives

0.2 mg/ml with 0.1 mg/ml rAlbumin (US sourced), 0.05% sodium azide

Storage

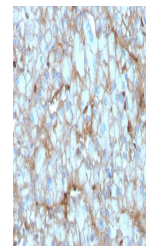
Store the C1QA antibody at 2-8°C (with azide) or aliquot and store at -20°C or colder (without azide).

Note

For research use only

Application notes

Optimal dilution of the antibody should be determined by the researcher.



IHC staining of FFPE human kidney with C...

Formula

0.2 mg/ml with 0.1 mg/ml BSA (US sourced), 0.05% sodium azide

Isotype

Mouse IgG2b, kappa

Clonality

Monoclonal

Purity

Protein G affinity chromatography

Uniprot ID

P02745

Hazard Information

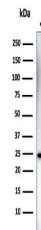
This C1QA antibody is available for research use only.

Dilution Range

Western blot: 1-2ug/ml, Immunohistochemistry (FFPE): 1-2ug/ml

Expiration Date

12 months from date of receipt.



Western blot testing of human PC3 cell l...