

---

## Product Datasheet

### AMACR / p504S Antibody (Prostate Cancer Marker) (orb639955)

**Description**

This antibody recognizes a protein of 42kDa,



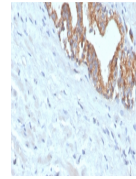
p504S. It i...

**Species/Host**

Rabbit

**Reactivity**

Human


**Conjugation**

Unconjugated

IHC testing of FFPE human prostate carci...

**Tested Applications**

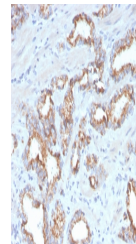
IHC-P, WB

**Immunogen**

Full length protein was used as the immunogen for the recombinant AMACR antibody.

**Preservatives**

0.2 mg/ml in 1X PBS with 0.1 mg/ml rAlbumin (US sourced) and 0.05% sodium azide


**Storage**

Store the recombinant AMACR antibody at 2-8°C (with azide) or aliquot and store at -20°C or colder (without azide).

**Note**

For research use only

**Application notes**

Optimal dilution of the antibody should be determined by the researcher.

IHC testing of FFPE human prostate carci...

**Formula**

0.2 mg/ml in 1X PBS with 0.1 mg/ml BSA (US sourced) and 0.05% sodium azide

**Isotype**

Rabbit IgG, kappa

**Clonality**

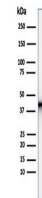
Recombinant

**Purity**

Protein A affinity chromatography

**Uniprot ID**

**Q9UHK6**


**Hazard Information**

This recombinant AMACR antibody is available for research use only.

Western blot testing of human kidney lys...

**Dilution Range**

Immunohistochemistry (FFPE): 1-2ug/ml for 30 min at RT, Western blot: 1-2ug/ml

**Expiration Date**

12 months from date of receipt.