
Product Datasheet

Estrogen Inducible Protein pS2 / TFF1 Antibody (orb639951)

Description

It recognizes a polypeptide of 6.5kDa, identified as


Species/Host

Mouse

Reactivity

Human

Conjugation

Unconjugated

Tested Applications

IHC-P

IHC staining of FFPE human breast carcin...

Immunogen

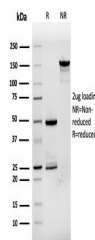
A recombinant full-length human protein was used as the immunogen for this recombinant pS2 antibody. Its epitope is located in the c-terminal region of human pS2 protein.

Preservatives

0.2 mg/ml with 0.1 mg/ml rAlbumin (US sourced), 0.05% sodium azide

Storage

Store the recombinant pS2 antibody at 2-8°C (with azide) or aliquot and store at -20°C or colder (without azide).



SDS-PAGE analysis of purified, BSA-free ...

Note

For research use only

Application notes

Optimal dilution of the antibody should be determined by the researcher.

Formula

0.2 mg/ml with 0.1 mg/ml BSA (US sourced), 0.05% sodium azide

Isotype

Mouse IgG1, kappa

Clonality

Recombinant

Purity

Protein G affinity chromatography

Uniprot ID

P04155

Hazard Information

This recombinant pS2 antibody is available for research use only.

Dilution Range

Immunohistochemistry (FFPE): 1-2ug/ml (not suitable for frozen tissues)

Expiration Date

12 months from date of receipt.