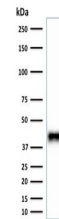


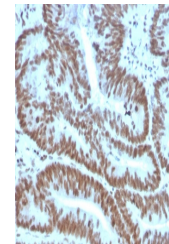
Product Datasheet

BMI1 Antibody (orb639924)

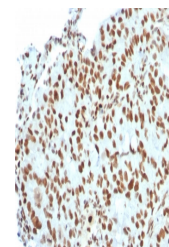
Description	The B cell-specific moloney murine leukemia virus integration site 1 (Bmi-1) is a transcriptional re...
Species/Host	Mouse
Reactivity	Human, Mouse
Conjugation	Unconjugated
Tested Applications	IF, IHC-P, WB
Immunogen	A recombinant human partial protein (amino acids 142-326) was used as the immunogen for this BMI1 antibody.
Preservatives	0.2 mg/ml with 0.1 mg/ml rAlbumin (US sourced), 0.05% sodium azide
Storage	Store the BMI1 antibody at 2-8°C (with azide) or aliquot and store at -20°C or colder (without azide).
Note	For research use only
Application notes	Optimal dilution of the antibody should be determined by the researcher.
Formula	0.2 mg/ml with 0.1 mg/ml BSA (US sourced), 0.05% sodium azide
Isotype	Mouse IgG1, kappa
Clonality	Monoclonal
Purity	Protein G affinity chromatography
Uniprot ID	P35226
Hazard Information	This BMI1 antibody is available for research use only.
Dilution Range	Western blot: 1-2ug/ml, Immunofluorescence: 1-2ug/ml, Immunohistochemistry (FFPE): 1-2ug/ml
Expiration Date	12 months from date of receipt.



Western blot testing of mouse NIH3T3 cel...



IHC staining of FFPE human colon carcino...



IHC staining of FFPE human breast carcin...