
Product Datasheet

PD-L1 Antibody / B7-H1 / CD274 (orb639912)

Description

PD-L1 is a checkpoint regulator in immune cells, it is


Species/Host

Mouse

Reactivity

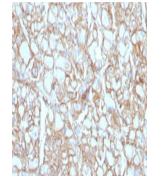
Human

Conjugation

Unconjugated

Tested Applications

IHC-P



IHC testing of FFPE lung SCC with recomb...

Immunogen

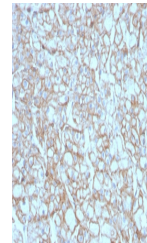
A portion of amino acids 39-191 from the human protein was used as the immunogen for this recombinant PD-L1 antibody.

Preservatives

0.2 mg/ml in 1X PBS with 0.1 mg/ml rAlbumin (US sourced) and 0.05% sodium azide

Storage

Store the recombinant PD-L1 antibody at 2-8°C (with azide) or aliquot and store at -20°C or colder (without azide).


Note

For research use only

Application notes

Optimal dilution of the antibody should be determined by the researcher.

IHC testing of FFPE lung SCC with recomb...

Formula

0.2 mg/ml in 1X PBS with 0.1 mg/ml BSA (US sourced) and 0.05% sodium azide

Isotype

Rabbit IgG, kappa

Clonality

Recombinant

Purity

Protein A affinity chromatography

Uniprot ID

Q9NZQ7

Hazard Information

This recombinant PD-L1 antibody is available for research use only.

Dilution Range

Immunohistochemistry (FFPE): 1-2ug/ml for 30 min at RT

Expiration Date

12 months from date of receipt.