

---

## Product Datasheet

### **RPA32 Antibody / Replication Protein A2 (orb639911)**

**Description**

Recognizes a protein of 34kDa, identified as a

as...

**Species/Host**

Mouse

**Reactivity**

Human

**Conjugation**

Unconjugated

**Tested Applications**

WB

**Immunogen**

A recombinant human full-length protein was used as the immunogen for this Replication Protein A2 antibody.

**Preservatives**

0.2 mg/ml with 0.1 mg/ml rAlbumin (US sourced), 0.05% sodium azide

**Storage**

Store the Replication Protein A2 antibody at 2-8°C (with azide) or aliquot and store at -20°C or colder (without azide).

**Note**

For research use only

**Application notes**

Optimal dilution of the antibody should be determined by the researcher.

**Formula**

0.2 mg/ml with 0.1 mg/ml BSA (US sourced), 0.05% sodium azide

**Isotype**

Mouse IgG2b, kappa

**Clonality**

Monoclonal

**Purity**

Protein G affinity chromatography

**Hazard Information**

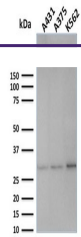
This Replication Protein A2 antibody is available for research use only.

**Dilution Range**

Western blot: 1-2ug/ml

**Expiration Date**

12 months from date of receipt.



Western blot testing of human samples wi...