
Product Datasheet

C1QA Antibody / Complement C1q A-Chain (orb639902)

Description

C1q, a subcomponent of the classical complement

| | |
|----------------------------|--|
| | mediate c... |
| Species/Host | Mouse |
| Reactivity | Human |
| Conjugation | Unconjugated |
| Tested Applications | ELISA, WB |
| Immunogen | A recombinant human partial protein (amino acids 104-237) was used as the immunogen for the C1QA antibody. |
| Preservatives | 0.2 mg/ml with 0.1 mg/ml rAlbumin (US sourced), 0.05% sodium azide |
| Storage | Store the C1QA antibody at 2-8°C (with azide) or aliquot and store at -20°C or colder (without azide). |
| Note | For research use only |
| Application notes | Optimal dilution of the antibody should be determined by the researcher. |
| Formula | 0.2 mg/ml with 0.1 mg/ml BSA (US sourced), 0.05% sodium azide |
| Isotype | Mouse IgG2b, kappa |
| Clonality | Monoclonal |
| Purity | Protein G affinity chromatography |
| Uniprot ID | P02745 |
| Hazard Information | This C1QA antibody is available for research use only. |
| Dilution Range | ELISA (order BSA-free format for coating), Western blot: 1-2ug/ml |
| Expiration Date | 12 months from date of receipt. |

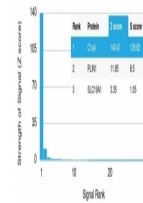


Western blot testing of human HepG2 cell...



Western blot testing of human spleen, PC...

Human Protein Microarray Specificity Validation



Analysis of HuProt (TM) microarray conta...