
Product Datasheet

IGF-1 Antibody / Insulin like Growth Factor 1 (orb639893)

Description

This antibody is specific to Insulin-like Growth

wit...

Species/Host

Rabbit

Reactivity

Human, Mouse, Rat

Conjugation

Unconjugated

Tested Applications

FACS

Immunogen

Recombinant full-length human protein was used as the immunogen for the recombinant Insulin-like Growth Factor 1 antibody.

Preservatives

0.2 mg/ml with 0.1 mg/ml rAlbumin (US sourced), 0.05% sodium azide

Storage

Store the recombinant Insulin-like Growth Factor 1 antibody at 2-8°C (with azide) or aliquot and store at -20°C or colder (without azide).

Note

For research use only

Application notes

Optimal dilution of the antibody should be determined by the researcher.

Formula

0.2 mg/ml with 0.1 mg/ml BSA (US sourced), 0.05% sodium azide

Isotype

Rabbit IgG

Clonality

Recombinant

Purity

Protein A affinity chromatography

Uniprot ID

P05019

Hazard Information

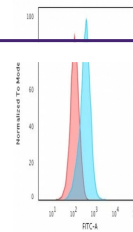
This recombinant Insulin-like Growth Factor 1 antibody is available for research use only.

Dilution Range

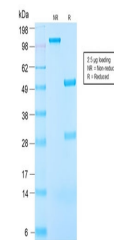
Flow cytometry: 1-2ug/million cells in 0.1ml

Expiration Date

12 months from date of receipt.



Flow cytometry testing of human K562 cel...



SDS-PAGE analysis of purified, BSA-free ...