

---

## Product Datasheet

### CD45 Antibody Cocktail (Leukocyte marker) (orb639889)

**Description**

Recognizes the CD45 leukocyte common antigen



isofo...

**Species/Host**

Mouse

**Reactivity**

Human

**Conjugation**

Unconjugated

**Tested Applications**

IHC-P, WB

**Immunogen**

Human recombinant full-length CD45 protein was used as the immunogen for the CD45 antibody.

**Preservatives**

0.2 mg/ml with 0.1 mg/ml rAlbumin (US sourced), 0.05% sodium azide

**Storage**

Store the CD45 antibody at 2-8°C (with azide) or aliquot and store at -20°C or colder (without azide).

**Note**

For research use only

**Application notes**

Optimal dilution of the antibody should be determined by the researcher.

**Formula**

0.2 mg/ml with 0.1 mg/ml BSA (US sourced), 0.05% sodium azide

**Isotype**

Mouse IgG1, kappa + Mouse IgG1, kappa

**Clonality**

Monoclonal

**Purity**

Protein G affinity chromatography

**Uniprot ID**
**P08575**
**Hazard Information**

This CD45 antibody is available for research use only.

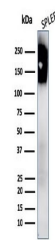
**Dilution Range**

Western blot: 1-2ug/ml, Immunohistochemistry (FFPE): 1-2ug/ml

**Expiration Date**

12 months from date of receipt.

IHC staining of FFPE human tonsil with C...



Western blot testing of human spleen lys...