
Product Datasheet

Prolactin Receptor Antibody / PRLR (orb639883)

Description

It recognizes a protein of 70kDa, identified as


Species/Host

Mouse

Reactivity

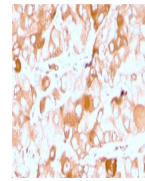
Human

Conjugation

Unconjugated

Tested Applications

IHC-P



IHC staining of FFPE human breast carcin...

Immunogen

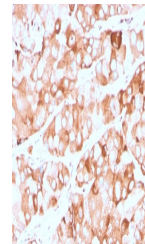
A recombinant full-length human protein was used as the immunogen for this recombinant Prolactin Receptor antibody.

Preservatives

0.2 mg/ml with 0.1 mg/ml rAlbumin (US sourced), 0.05% sodium azide

Storage

Store the recombinant Prolactin Receptor antibody at 2-8°C (with azide) or aliquot and store at -20°C or colder (without azide).



IHC staining of FFPE human breast carcin...

Note

For research use only

Application notes

Optimal dilution of the antibody should be determined by the researcher.

Formula

0.2 mg/ml with 0.1 mg/ml BSA (US sourced), 0.05% sodium azide

Isotype

Mouse IgG1, kappa

Clonality

Recombinant

Purity

Protein G affinity chromatography

Uniprot ID

P16471

Hazard Information

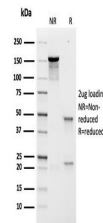
This recombinant Prolactin Receptor antibody is available for research use only.

Dilution Range

Immunohistochemistry (FFPE): 1-2ug/ml (not suitable for frozen tissues)

Expiration Date

12 months from date of receipt.



SDS-PAGE analysis of purified, BSA-free ...