

---

## Product Datasheet

### KRT8 Antibody / Cytokeratin 8 (orb639876)

**Description**

Cytokeratin 8 (CK8) belongs to the type II (or B or


**Species/Host**

Rabbit

**Reactivity**

Human

**Conjugation**

Unconjugated

**Tested Applications**

IHC-P

IHC testing of FFPE human colon tissue w...

**Immunogen**

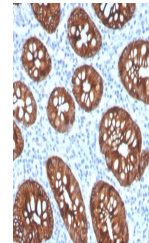
A keratin preparation from human carcinoma cells was used as the immunogen for this recombinant Cytokeratin 8 antibody. The epitope of this mAb has been localized to amino acids 343-357.

**Preservatives**

0.2 mg/ml in 1X PBS with 0.1 mg/ml rAlbumin (US sourced) and 0.05% sodium azide

**Storage**

Store the recombinant Cytokeratin 8 antibody at 2-8°C (with azide) or aliquot and store at -20°C or colder (without azide).



IHC testing of FFPE human colon tissue w...

**Note**

For research use only

**Application notes**

Optimal dilution of the antibody should be determined by the researcher.

**Formula**

0.2 mg/ml in 1X PBS with 0.1 mg/ml BSA (US sourced) and 0.05% sodium azide

**Isotype**

Rabbit IgG, kappa

**Clonality**

Recombinant

**Purity**

Protein A affinity chromatography

**Uniprot ID**

**P05787**

**Hazard Information**

This recombinant Cytokeratin 8 antibody is available for research use only.

**Dilution Range**

Immunohistochemistry (FFPE): 1-2ug/ml for 30 min at RT

**Expiration Date**

12 months from date of receipt.