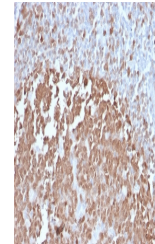


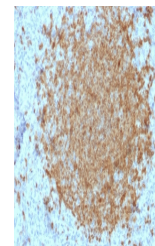
Product Datasheet

POU2AF1 Antibody / BOB-1 (orb639871)

Description	BOB.1 expression in a variety of established B-cell lines, representing different stages of B-cell d...
Species/Host	Mouse
Reactivity	Human
Conjugation	Unconjugated
Tested Applications	IHC-P, WB
Immunogen	A portion of amino acids 148-255 from the human protein was used as the immunogen for the BOB.1 antibody.
Preservatives	0.2 mg/ml with 0.1 mg/ml rAlbumin (US sourced), 0.05% sodium azide
Storage	Store the BOB.1 antibody at 2-8°C (with azide) or aliquot and store at -20°C or colder (without azide).
Note	For research use only
Application notes	Optimal dilution of the antibody should be determined by the researcher.
Formula	0.2 mg/ml with 0.1 mg/ml BSA (US sourced), 0.05% sodium azide
Isotype	Mouse IgG2b, kappa
Clonality	Monoclonal
Purity	Protein G affinity chromatography
Uniprot ID	Q16633
Hazard Information	This BOB.1 antibody is available for research use only.
Dilution Range	Western blot: 1-2ug/ml, Immunohistochemistry (FFPE): 1-2ug/ml
Expiration Date	12 months from date of receipt.



IHC testing of FFPE human tonsil with BOB.1 antibody



IHC testing of FFPE human spleen with BOB.1 antibody



Western blot testing of human Raji cell line with BOB.1 antibody