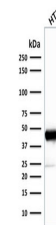


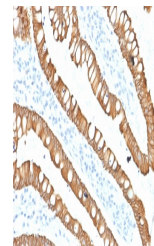
Product Datasheet

Cytokeratin 20 Antibody / CK20 (orb639869)

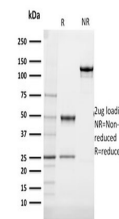
Description	his MAb recognizes an intermediate filament protein of 46kDa, identified as cytokeratin 20 (KRT20). ...
Species/Host	Mouse
Reactivity	Human
Conjugation	Unconjugated
Tested Applications	IHC-P, WB
Immunogen	A recombinant human partial protein (amino acids 196-323) was used as the immunogen for this Cytokeratin 20 antibody.
Preservatives	0.2 mg/ml with 0.1 mg/ml rAlbumin (US sourced), 0.05% sodium azide
Storage	Store the Cytokeratin 20 antibody at 2-8°C (with azide) or aliquot and store at -20°C or colder (without azide).
Note	For research use only
Application notes	Optimal dilution of the antibody should be determined by the researcher.
Formula	0.2 mg/ml with 0.1 mg/ml BSA (US sourced), 0.05% sodium azide
Isotype	Mouse IgG2b, kappa
Clonality	Monoclonal
Purity	Protein G affinity chromatography
Uniprot ID	P35900
Hazard Information	This Cytokeratin 20 antibody is available for research use only.
Dilution Range	Western blot: 1-2ug/ml, Immunohistochemistry (FFPE): 1-2ug/ml
Expiration Date	12 months from date of receipt.



Western blot testing of human HT29 cell ...



IHC staining of FFPE human colon carcino...



SDS-PAGE analysis of purified, BSA-free ...