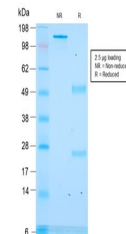


Product Datasheet

CLIP Antibody / ACTH (orb639867)

Description	ACTH (same as Corticotropin) is a 39 amino acid active peptide produced by the anterior pituitary. T...
Species/Host	Mouse
Reactivity	Human
Conjugation	Unconjugated
Tested Applications	ELISA
Immunogen	Amino acids 25-39 (NGAEDESAEAFPLEF) from human ACTH were used as the immunogen for this recombinant CLIP antibody.
Preservatives	0.2 mg/ml with 0.1 mg/ml rAlbumin (US sourced), 0.05% sodium azide
Storage	Store the recombinant CLIP antibody at 2-8°C (with azide) or aliquot and store at -20°C or colder (without azide).
Note	For research use only
Application notes	Optimal dilution of the antibody should be determined by the researcher.
Formula	0.2 mg/ml with 0.1 mg/ml BSA (US sourced), 0.05% sodium azide
Isotype	Mouse IgG1, kappa
Clonality	Recombinant
Purity	Protein G affinity chromatography
Uniprot ID	P01189
Hazard Information	This recombinant CLIP antibody is available for research use only.
Dilution Range	ELISA (order BSA-free format for coating)
Expiration Date	12 months from date of receipt.



SDS-PAGE analysis of purified, BSA-free ...