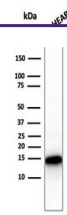

Product Datasheet

Cytochrome C Antibody (orb639865)

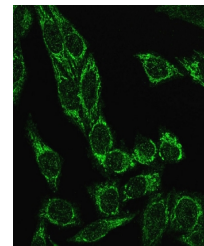
Description

In mammalian cells, the highly conserved cytochrome

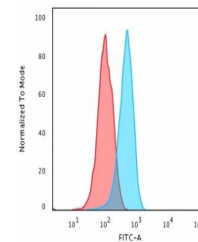
Species/Host	Rabbit
Reactivity	Human, Mouse, Rat
Conjugation	Unconjugated
Tested Applications	FACS, IF, IHC-P, WB
Immunogen	A recombinant full-length human protein was used as the immunogen for this recombinant Cytochrome C antibody.
Preservatives	0.2 mg/ml with 0.1 mg/ml rAlbumin (US sourced), 0.05% sodium azide
Storage	Store the recombinant Cytochrome C antibody at 2-8°C (with azide) or aliquot and store at -20°C or colder (without azide).
Note	For research use only
Application notes	Optimal dilution of the antibody should be determined by the researcher.
Formula	0.2 mg/ml with 0.1 mg/ml BSA (US sourced), 0.05% sodium azide
Isotype	Rabbit IgG
Clonality	Recombinant
Purity	Protein A affinity chromatography
Uniprot ID	P99999
Hazard Information	This recombinant Cytochrome C antibody is available for research use only.
Dilution Range	Immunohistochemistry (FFPE): 0.25-0.5ug/ml, Flow cytometry: 1-2ug/million cells, Western blot: 1-2ug/ml, Immunofluorescence: 1-2ug/ml
Expiration Date	12 months from date of receipt.



Western blot testing of human heart lysa...



Immunofluorescent staining of PFA-fixed ...



Flow cytometry testing of PFA-fixed huma...