
Product Datasheet

**Alpha 1 Antitrypsin Antibody / AAT / SERPINA1
(orb639863)**

Description

The immunohistochemical staining of AAT is useful


Species/Host

Rabbit

Reactivity

Human

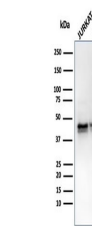
Conjugation

Unconjugated

Tested Applications

IHC-P, WB

IHC staining of FFPE human breast with r...



Western blot testing of human samples wi...

Immunogen

A recombinant human Alpha-1-Antitrypsin (AAT) partial protein was used as the immunogen for this recombinant Alpha 1 Antitrypsin antibody.

Preservatives

0.2 mg/ml with 0.1 mg/ml rAlbumin (US sourced), 0.05% sodium azide

Storage

Store the recombinant Alpha 1 Antitrypsin antibody at 2-8°C (with azide) or aliquot and store at -20°C or colder (without azide).

Note

For research use only

Application notes

Optimal dilution of the antibody should be determined by the researcher.

Formula

0.2 mg/ml with 0.1 mg/ml BSA (US sourced), 0.05% sodium azide

Isotype

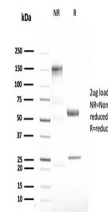
Rabbit IgG

Clonality

Recombinant

Purity

Protein A affinity chromatography



SDS-PAGE analysis of purified, BSA-free ...

Uniprot ID

P01009

Hazard Information

This recombinant Alpha 1 Antitrypsin antibody is available for research use only.

Dilution Range

Immunohistochemistry (FFPE): 1-2ug/ml, Western blot: 1-2ug/ml

Expiration Date

12 months from date of receipt.