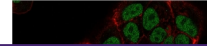

Product Datasheet

MSH6 Antibody (orb639861)

Description

The finding that mutations in DNA mismatch repair


Species/Host

Mouse

Reactivity

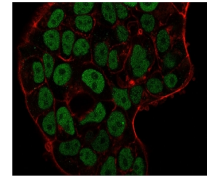
Human

Conjugation

Unconjugated

Tested Applications

ELISA, IF, IHC-P, WB



Immunofluorescence staining of PFA-fixed...

Immunogen

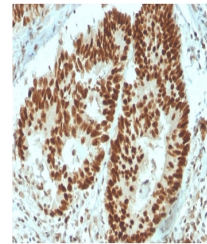
A recombinant human partial protein (amino acids 374-540) was used as the immunogen for the MSH6 antibody.

Preservatives

0.2 mg/ml with 0.1 mg/ml rAlbumin (US sourced), 0.05% sodium azide

Storage

Store the MSH6 antibody at 2-8°C (with azide) or aliquot and store at -20°C or colder (without azide).



IHC staining of FFPE human colon carcino...

Note

For research use only

Application notes

Optimal dilution of the antibody should be determined by the researcher.

Formula

0.2 mg/ml with 0.1 mg/ml BSA (US sourced), 0.05% sodium azide

Isotype

Mouse IgG2b, kappa

Clonality

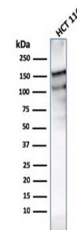
Monoclonal

Purity

Protein G affinity chromatography

Uniprot ID

P52701



Western blot testing of human HCT116 lys...

Hazard Information

This MSH6 antibody is available for research use only.

Dilution Range

ELISA (order BSA-free format for coating), Immunofluorescence: 1-2ug/ml, Western blot: 1-2ug/ml, Immunohistochemistry (FFPE): 1-2ug/ml

Expiration Date

12 months from date of receipt.