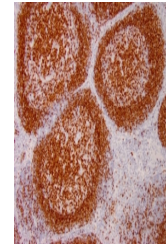


Product Datasheet

PAX5 Antibody (orb639848)

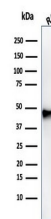
Description	The PAX5 gene is a member of the paired box (PAX) family of transcription factors. The central featu...
Species/Host	Mouse
Reactivity	Human
Conjugation	Unconjugated
Tested Applications	IHC-P, WB
Immunogen	A recombinant human partial protein (amino acids 235-382) was used as the immunogen for the PAX5 antibody.
Preservatives	0.2 mg/ml with 0.1 mg/ml rAlbumin (US sourced), 0.05% sodium azide
Storage	Store the PAX5 antibody at 2-8°C (with azide) or aliquot and store at -20°C or colder (without azide).
Note	For research use only
Application notes	Optimal dilution of the antibody should be determined by the researcher.
Formula	0.2 mg/ml with 0.1 mg/ml BSA (US sourced), 0.05% sodium azide
Isotype	Mouse IgG1, lambda
Clonality	Monoclonal
Purity	Protein G affinity chromatography
Uniprot ID	Q02548
Hazard Information	This PAX5 antibody is available for research use only.
Dilution Range	Western blot: 1-2ug/ml, Immunohistochemistry (FFPE): 1-2ug/ml
Expiration Date	12 months from date of receipt.



IHC testing of human tonsil with PAX5 antibody.



IHC testing of human tonsil with PAX5 antibody.



Western blot testing of human Raji cell line.