
Product Datasheet

Ornithine Decarboxylase Antibody / ODC1 (orb639842)

Description

Recognizes a 53kDa protein, identified as the

an...

Species/Host

Mouse

Reactivity

Human

Conjugation

Unconjugated

Tested Applications

IHC-P, WB

Immunogen

Recombinant human ODC-1 protein was used as the immunogen for this recombinant ODC1 antibody.

Preservatives

0.2 mg/ml with 0.1 mg/ml rAlbumin (US sourced), 0.05% sodium azide

Storage

Store the recombinant ODC1 antibody at 2-8°C (with azide) or aliquot and store at -20°C or colder (without azide).

Note

For research use only

Application notes

Optimal dilution of the antibody should be determined by the researcher.

Formula

0.2 mg/ml with 0.1 mg/ml BSA (US sourced), 0.05% sodium azide

Isotype

Mouse IgG1, kappa

Clonality

Recombinant

Purity

Protein G affinity chromatography

Uniprot ID
P11926
Hazard Information

This recombinant ODC1 antibody is available for research use only.

Dilution Range

Immunohistochemistry (FFPE): 0.25-0.5ug/ml, Western blot: 0.5-1ug/ml

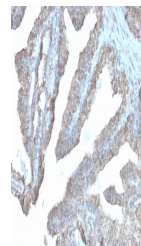
Expiration Date

12 months from date of receipt.

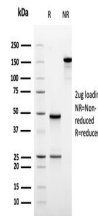
kDa



Western blot testing of human PC-3 cell ...



IHC staining of FFPE human prostate carc...



SDS-PAGE analysis of purified, BSA-free ...